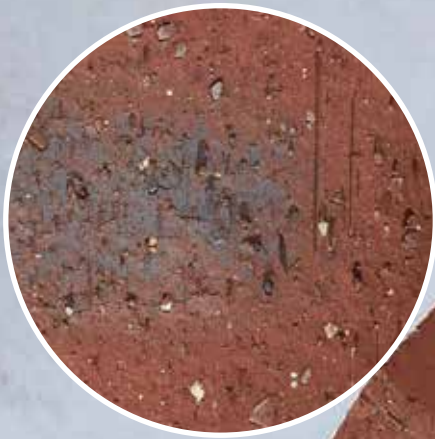


# Namib Red Travertine FBS



CLASSIFICATION	FBS
TEXTURE	A light textured finish with a natural clay grain appearance.

Choose clay face bricks for their unmatched durability, timeless beauty, and excellent thermal insulation, all while requiring no maintenance, ensuring your building stands the test of time with minimal effort.



Variations in colour, texture, and size are natural characteristics of clay products and production variations can occur from batch to batch. Whilst every effort is made to provide brochures consistent with products delivered to site, they should be viewed as a guide only.

# Namib Red Travertine FBS



## SPECIFICATIONS

<b>Size</b> (width x length x height)	223 x 105 x 74mm	<b>Classification</b>	FBS
<b>SANS</b>	227:2007	<b>ISO</b>	'-
<b>Typical Compressive Strength</b>	>30 MPa	<b>Typical 24<sup>hr</sup> Water Absorbtion</b>	>7%
<b>Moisture Expansion Category</b>	II	<b>Efflorescence Rating</b>	Slight
<b>Expoure Zone Suitability</b>	1-3	<b>Bricks per m<sup>2</sup></b> (excluding cutting & waste)	51
<b>Factory Manufactured At</b>	Kwastina, Gauteng	<b>Bricks per pallet</b>	464
<b>Average mass per brick</b>	2.4kg	<b>Available in Special Shaped Bricks</b>	Yes



[www.corobrik.co.za](http://www.corobrik.co.za)

Download the high-resolution swatches, BIM files and view more project photos | [www.corobrik.co.za](http://www.corobrik.co.za)

Variations in colour, texture, and size are natural characteristics of clay products and production variations can occur from batch to batch. Whilst every effort is made to provide brochures consistent with products delivered to site, they should be viewed as a guide only.

For image and project credits, please visit: [www.corobrik.co.za/featured-projects](http://www.corobrik.co.za/featured-projects)

Information correct as at 28/06/2024