

# Firelight Satin FBX



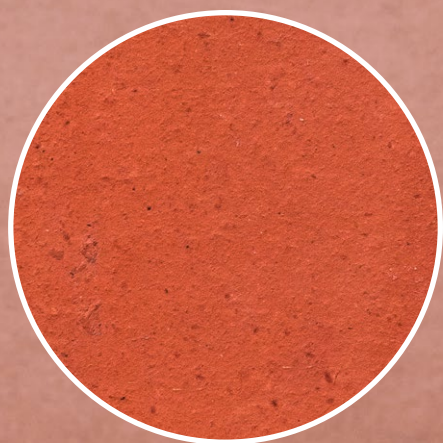
CLASSIFICATION

FBX

TEXTURE

Bricks with a flat and even surface, providing a clean look with minimal texture.

Choose clay face bricks for their unmatched durability, timeless beauty, and excellent thermal insulation, all while requiring no maintenance, ensuring your building stands the test of time with minimal effort.



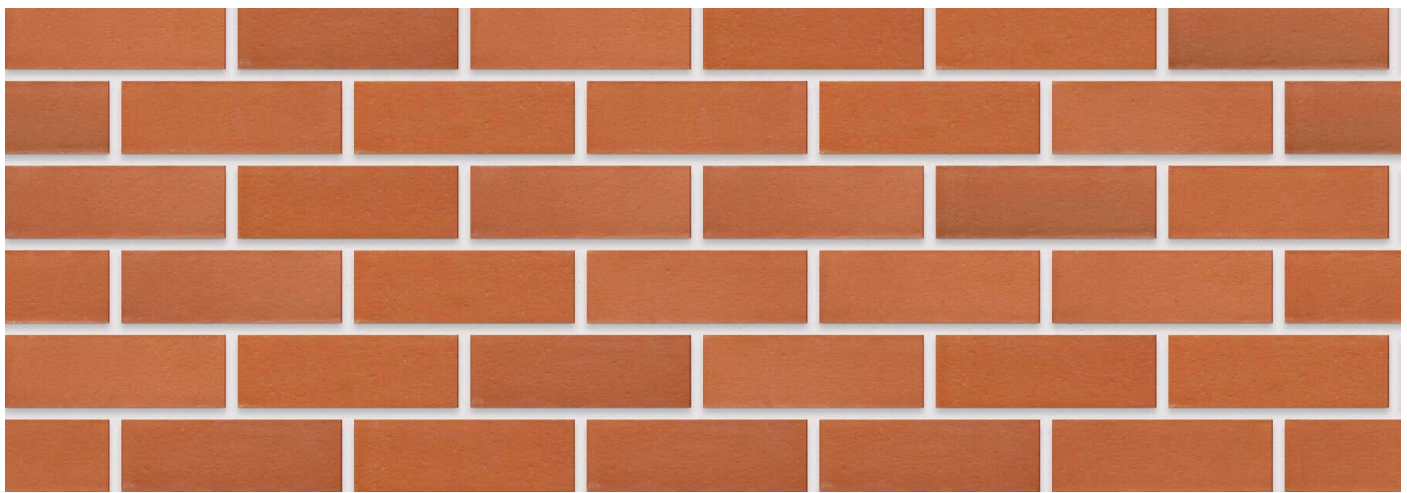
Variations in colour, texture, and size are natural characteristics of clay products and production variations can occur from batch to batch. Whilst every effort is made to provide brochures consistent with products delivered to site, they should be viewed as a guide only.

# Firelight Satin FBX

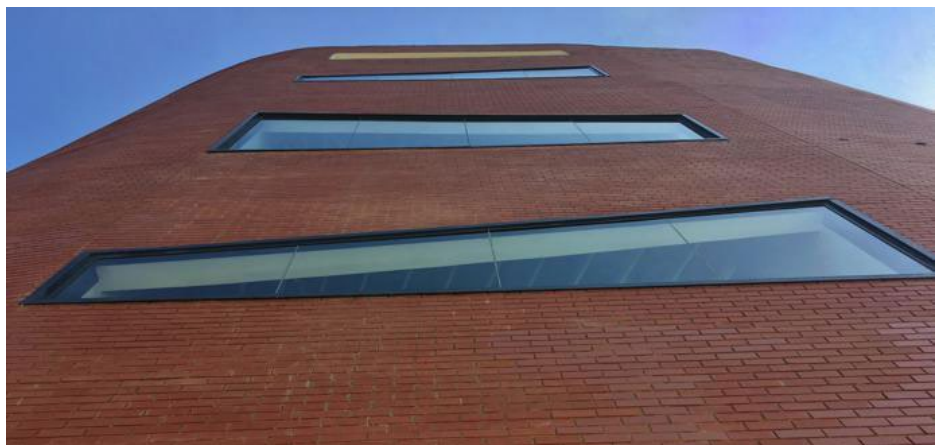


## SPECIFICATIONS

Size (width x length x height)	222 x 107 x 72mm	Classification	FBX
SANS	227:2007	ISO	9001:2015
Typical Compressive Strength	>43 MPa	Typical 24 <sup>hr</sup> Water Absorbtion	>10%
Moisture Expansion Category	II	Efflorescence Rating	Nil
Expoure Zone Suitability	03-Jan	Bricks per m <sup>2</sup> (excluding cutting & waste)	51
Factory Manufactured At	Midrand, Gauteng	Bricks per pallet	480
Average mass per brick	2.4kg	Available in Special Shaped Bricks	Yes



[www.corobrik.co.za](http://www.corobrik.co.za)



Download the high-resolution swatches, BIM files and view more project photos | [www.corobrik.co.za](http://www.corobrik.co.za)

Variations in colour, texture, and size are natural characteristics of clay products and production variations can occur from batch to batch. Whilst every effort is made to provide brochures consistent with products delivered to site, they should be viewed as a guide only.

For image and project credits, please visit: [www.corobrik.co.za/featured-projects](http://www.corobrik.co.za/featured-projects)

Information correct as at 28/06/2024