

THE NEW BREEZEBLOCK



THE NEW BREEZE- BLOCK

Discover the latest trend in interior and exterior design with the new Corobrik Breezeblock, available in a wide range of colors. This versatile product is perfect for creating stylish and functional spaces, making it a must-have for contemporary architectural projects.



COROBRIK | THE BREEZEBLOCK



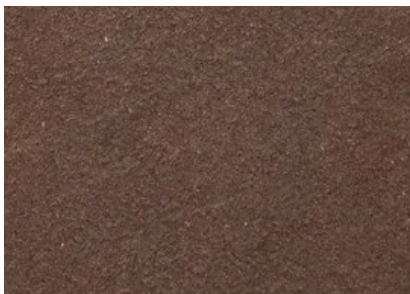
AGATE SATIN



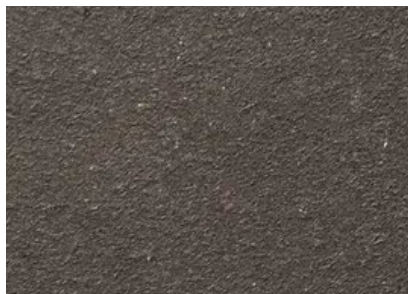
SILVERGREY SATIN



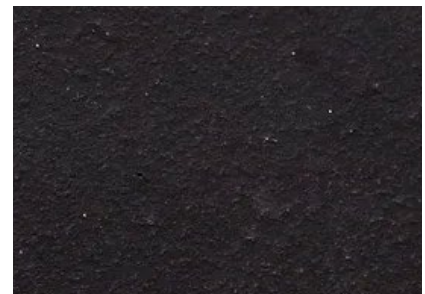
TITANIUM SATIN



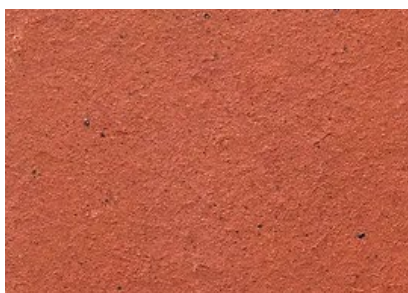
ONYX SATIN



PLATINUM SATIN



BLACK BRICK SATIN



ROAN SATIN



FIRELIGHT SATIN

THE BREEZEBLOCK



Variations in colour, texture, and size are natural characteristics of clay products and production variations can occur from batch to batch. Whilst every effort is made to provide brochures consistent with products delivered to site, they should be viewed as a guide only.

SPECIFICATIONS

The specifications provided below apply exclusively to the Agate Breezeblock. Specifications for other colour products may differ.

Size (length x width x height)	222 x 73 x 106 mm	Average mass per brick	2.2 kg
SANS	-	ISO	9001: 2015
Typical Compressive Strength* (Breezeblock)	>10 MPa	Typical 24^{hr} Water Absorbtion	9.1
Moisture Expansion Category	TBC	Efflorescence Rating	TBC
Expoure Zone Suitability	TBC	Bricks per m² (12mm joint, excluding cutting & waste)	37
Factory Manufactured At	Midrand, Gauteng	Bricks per pallet	500

* Typical Compressive Strength in this case refers to the Breezeblock laid on stretcher.



Download the high-resolution swatches, BIM files and view more project photos | www.corobrik.co.za